

OPERATION MANUAL PREFAB EASY SCREED



LIEVERS HOLLAND

Groot Mijdrechtstraat 68 – 3641 RW

P.O. Box 103 - 3640 AC

Mijdrecht (NL)

Tel.: 0031 – (0)297-231900 / Fax: 0031 – (0)297-231909

E-mail: info@lieversholland.nl / Internet: www.lieversholland.com

CONTENT

1. PREFACE	3
2. PREFACE	4
3. TECHNICAL DATA	5
4. SAFETY.....	6
5. USE.....	8
6. MAINTENANCE.....	10
7. PARTS LIST	11
8. TROUBLESHOOTING, REPAIRS.....	16
9. DISMANTLING, DISPOSAL.....	17
10. DECLARATION OF CONFORMITY	18

© Lievers Holland, NL 2016

All rights are reserved. Reprints, copies, adaptations for new editions and publications in any form or through any media, including abstract forms are not permitted unless written permissions is first obtained from Lievers Holland.

Lievers Holland may not be held responsible for any guarantees or liabilities for the contents of this publication and points to, in this case, all implied securities for suitability of merchantability or any other purposes. Lievers Holland further retains the right to revise this publication and to alter the contents over certain periods of time, without the obligation to report such alterations and changes first.

1. Preface

This manual has been written to help you operate and maintain Prefab Easy Screed safely. This manual is intended for dealers and operators of Prefab Easy Screed and contains useful instructions for use, maintenance and repair. These instructions need to be respected and followed.

Guarantee provisions

All damage to parts of this machine, occurring within 12 months after date of purchase as a consequence of material, production or construction defects, will be replaced by the manufacturer as soon as possible.

The manufacturer declines all responsibility for unsafe situations, accidents and damage caused by:

- Ignoring safety and using instructions as described on the machine or the instruction manual.
- Incompetent or incorrect maintenance.
- Use of the machine by unqualified personnel (employees who are unfamiliar with the content of this instruction manual).
- Storing the machine in a damp place.
- Other use than the prescribed use.
- Cleaning of the machine with a high pressure cleaner or by a water jet under high pressure.
- Alternations of the machine carried out by other than manufacturer. This also includes assembling of non-original parts.

(Furthermore are applicable the general terms of delivery and payment of the "METAALUNIE")



Guarantee

Prefab Easy Screed nr. _____

Date of purchase: _____



Fig. 1: Rating plate Prefab Easy Screed

The rating plate can be found on the drive unit

2. Preface

Intended use

Prefab Easy Screed is an easy-to-use vibrating profile for finishing prefab elements. The Prefab Easy Screed consists of an electrical drive unit with speed regulator mounted on a lightweight profile with 2 carrying handles. The drive unit has a user friendly clamping system for easy exchanging of beams. The drive unit is available in 230V / 50-60 Hz. On request available in 115V / 50-60 Hz. The profiles are available in various lengths.

Working

Prefab Easy Screed is used with forms / rails. The profile has a dual purpose and can be used for form-to-form screeding or wet screeding. By rotating the power-unit 180 degrees the operator can choose which side of the blade he prefers.

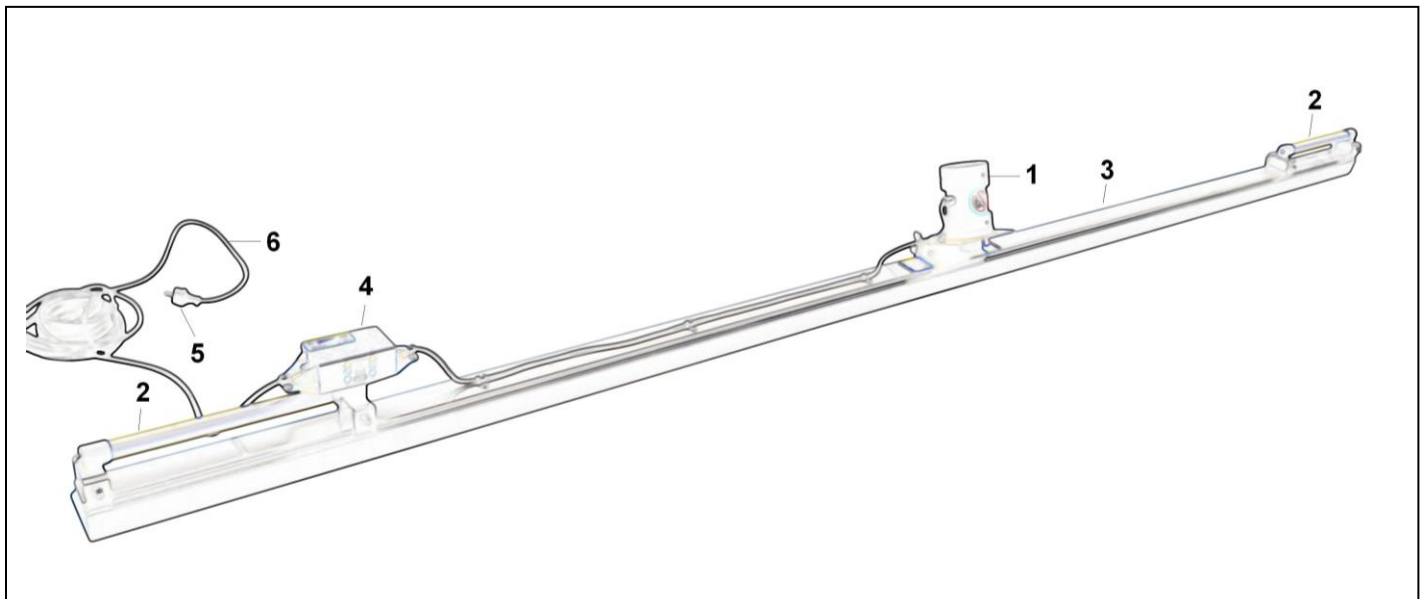


Fig. 2: Overview important components

1. Motor 230V/50 Hz
2. Carrying handle
3. Profile
4. Speed regulator
5. Plug
6. Cable

3. Technical data

Technical data

	Prefab Easy Screed (230V/50-60 Hz)	Prefab Easy Screed (115V/50-60 Hz)
Voltage	230V/ 1 phase/ 50-60Hz.	115V/ 1 phase/ 50-60Hz.
Capacity	350 watt	350 watt
Revolutions	11.000 rpm.	11.000 rpm.
Weight	2.44 m 19,6 Kg	2.44 m 19.6 Kg
fuel	-----	-----
Insulation	IP 54, splash proof Double insulated	IP 54, splash proof Double insulated
Sound press. Level ISO 6081	76 dB(A) at operator's place	76 dB(A) at operator's place
Value of accelaration **	2,46 m/s ²	2,46 m/s ²
Comfort exposure	=8,3 hr =33 hr max.	=8,3 hr =33 hr max.

Table 1: Technical data Prefab Easy Screed

** The weighted effective value of acceleration, determined according to ISO 5349

4. Safety

Explanation of the used safety symbols:



1. Read the instruction manual before using the machine.
2. Safety glasses, safety helmet and ear protection compulsory.
3. Working gloves compulsory.
4. Safety shoes with extra protection compulsory.
5. Before opening remove the plug.
6. Dangerous electric voltage
7. Be careful.

Fig. 3: Safety symbols Prefab Easy Screed

ENSURE, THAT ALL SYMBOLS ON THE MACHINE, CAN ALWAYS BE CLEARLY READ.

4.1 Safety aspects

The following safety aspects apply to the machine:

- Safety symbols are present on the Prefab Easy Screed

4.2 Safety precautions

- The Lievers bullfloats have been developed and tested in accordance with the strict international safety standards.
- Before operating these machines, make sure to have read this manual carefully. If you have any questions, do not hesitate to contact the supplier.
- Ensure that you are qualified (familiar with the contents of this manual), to operate and carry out light maintenance work to the machine.
- Wear safety shoes with extra protection (steel caps and anti-slip soles).
- Wear a safety helmet and hearing protection.
- Wear safety glasses, working gloves which do not conduct electricity and protective clothing.
- Ensure that all symbols on the machine, can always be clearly read.
- Be careful when lifting and carrying the bullfloat. Do not bend forwards when picking up the machine, but bend your knees.
- When cleaning the machine, ensure that no water or cleaning detergents get into the motorhousing.
- When the machine is not being used for longer periods of time, then it must be stored in a dry and clean area.
- Regular maintenance of the machine promotes safe operation.

The following safety-aspects specifically apply to those Lievers products which are equipped with an electrical drive unit:

- Place the wires between the electrical source and the work place in such a way, that they cannot be damaged and your colleagues cannot trip over them.
- Do not use the machine in an explosion endangered area.
- Check that the electrical source complies with the local valid regulations.
- Use an electrical source which is provided with an earth leakage switch or attach a safety transformer between the electrical mains and the machine.
- Regularly check the connections of the supply-cable to the switch.
- Ensure that the wall socket and possible connections between the extension leads are protected against dampness.
- Do not pull the plug out of the wall socket or extension lead by its lead.
- Check the feeder cable's outercasing and if in use extension lead's outercasing before you connect the machine to the electrical mains. The outercasing may not be damaged. Replace the cable if you cannot read the marks on the outercasing anymore.
- Check the machine's cable-connections before you connect the machine to the electrical mains. The cables must be properly connected.
- Switch off the machine, when the electrical power cuts off. This prevents the machine from starting suddenly when the electrical power comes on again.
- Disconnect the electrical supply to the machine, before you start to clean or maintain the machine.
- Ensure that the ventilation slots of the machine are free from dirt and moisture.

5. Use

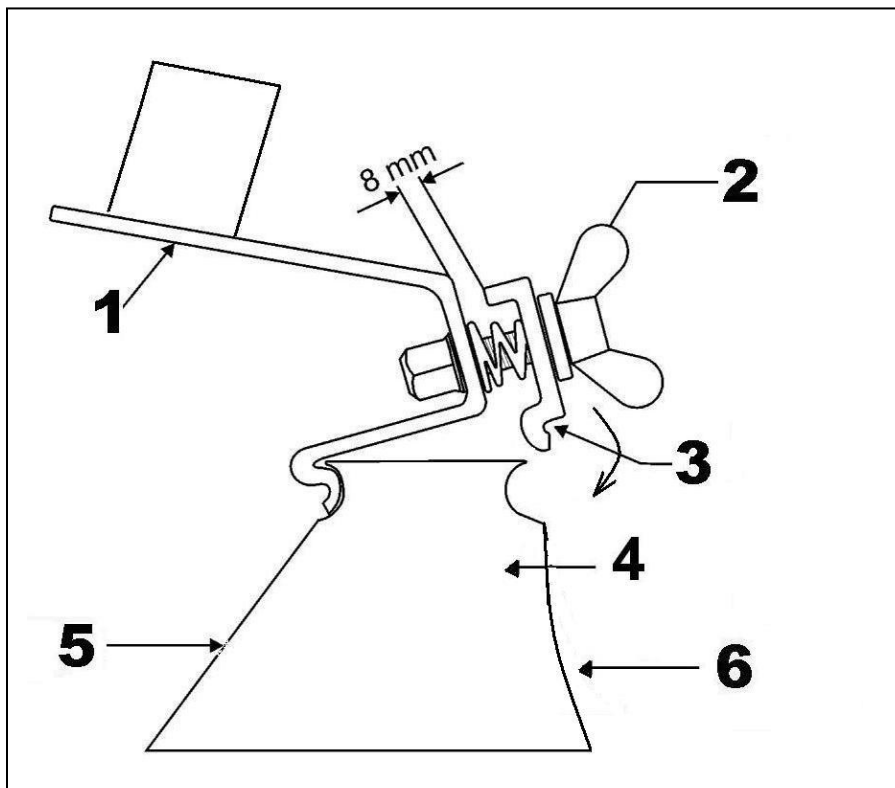
This chapter describes the use of the Prefab Easy Screed

FOR THE LOCATION AND DESCRIPTION OF THE PREFAB EASY SCREED PARTS, WHICH ARE MENTIONED IN THE TEXT, WE REFER TO FIGURE 2 ON PAGE 4.

5.1. Assembling

When delivered the screed is not ready-for-use. The drive unit and the handles need to be mounted. Required material: 2 x socket wrench.

- 1) Mount the drive unit onto the middle of the blade profile with wingbolts. To connect the power-unit to the blade profile loosen the 3 wingbolts about 8mm. until the front clamping plate no. 3 fits into the collar of the profile. (see figure 4). Now tighten the 3 wingbolts no.2. Careful: Make sure that the unit is mounted between the 2 indication arrows, located on the blade.
- 2) Mount the handles onto both ends of the profile. Use 2 socket wrenches.
- 3) Attach the cable between the motor and speed regulator onto the profile with cable clamps. Make sure that the cable is not coming off while finishing the prefab element,



1. Motor Mounting Plate
2. Wingbolt
3. Clamping Plate Profile
4. Blade profile
5. wet screed side
6. Form-to-form screed side

Fig. 4: Quick Connection System

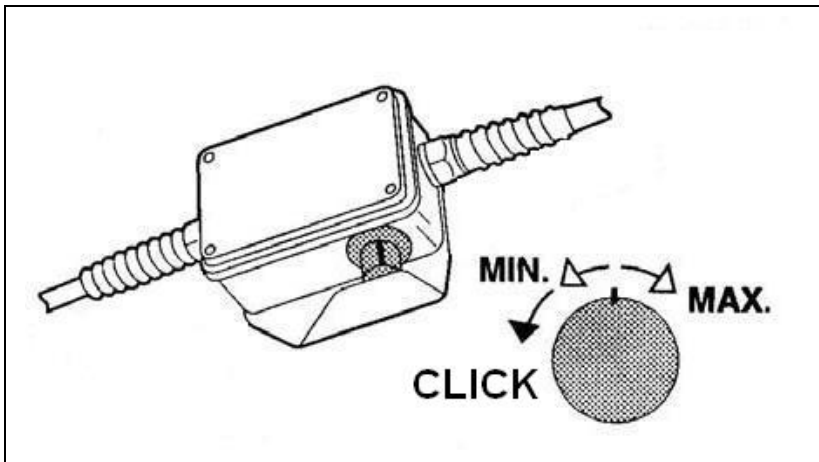


Fig. 5: Speed regulator

5.2. Use

1. Check that the profile is properly assembled and that the switch is in the OFF- position.
2. Place the machine in the direct vicinity of where you are going to finish the concrete.
3. Put the plug of the drive-unit's feeder cable in the wall socket.
4. Place the machine on the surface of the freshly poured concrete, and turn the speed regulator slowly to the required revolutions.
5. Now start to finish the surface.
6. After having finished one lane of concrete, switch of machine by turning the speed regulator's knob to the position **-MIN-**, You will hear a **"CLICK"**. **Tip:** If the processed concrete-surface is not smooth enough, repeat the procedures **4, 5 and 6**.
7. Pull the plug of the feeder cable out of the wall socket.
8. Clean the machine with water and a brush.
9. After use, place the Prefab Easy Screed on a dry and stable surface.

6. Maintenance

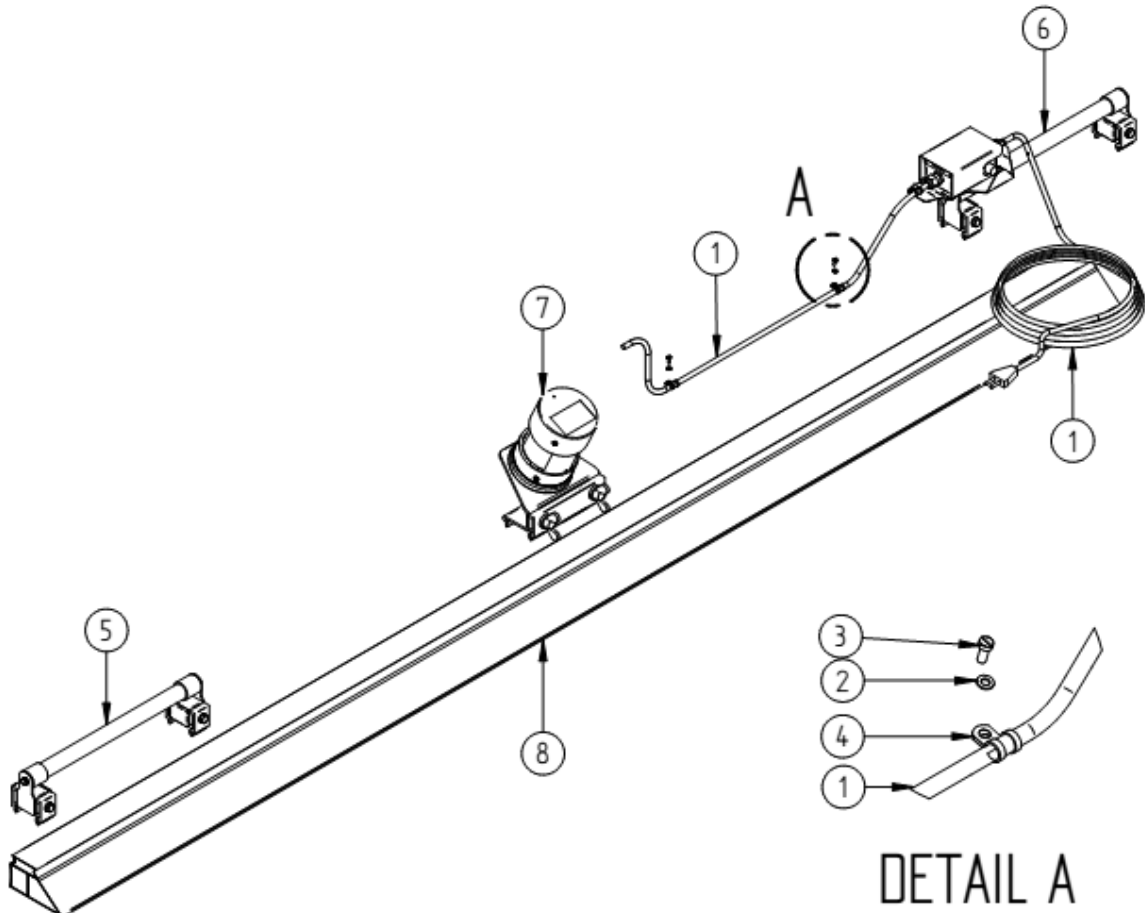
Although the Prefab Easy Screed only has a few moving parts, regular maintenance promotes a long and trouble-free life.

WARNING: NEVER USE A HIGH PRESSURE WATER CLEANER TO CLEAN THIS MACHINE WITH AN ELECTRICAL DRIVE UNIT.

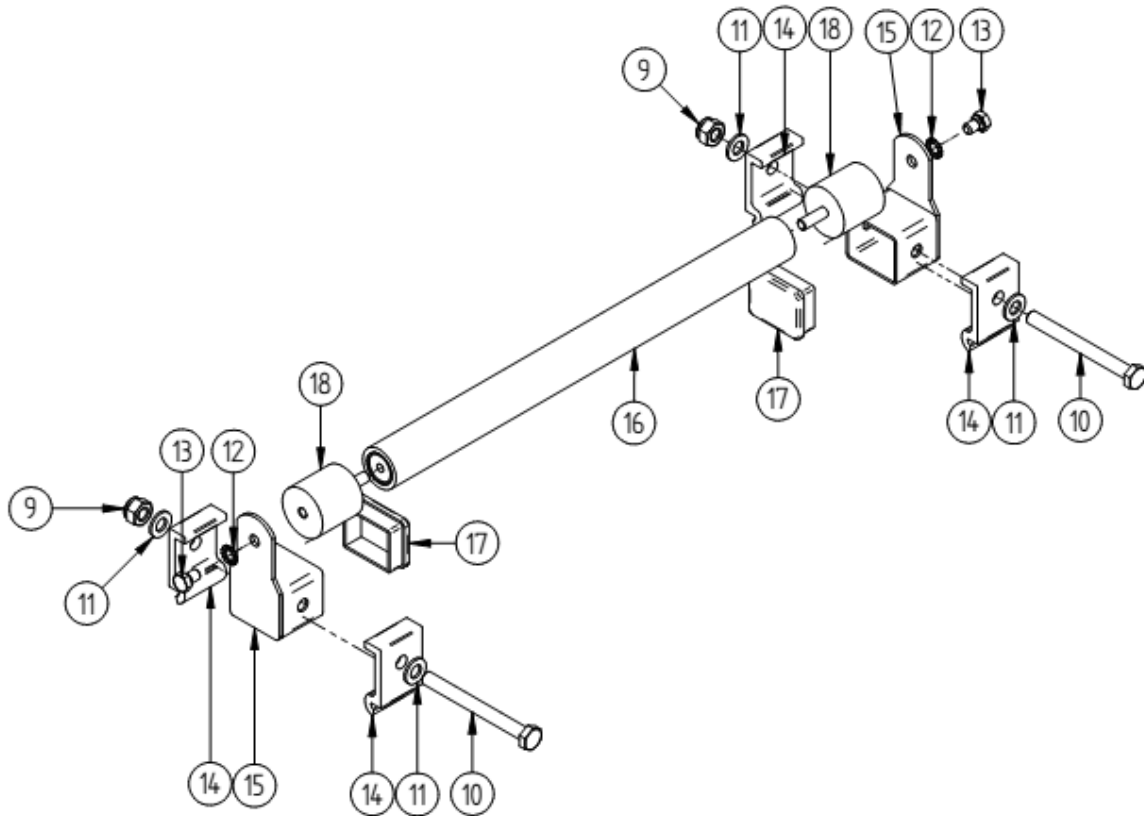
WARNING: CUT OFF THE ELECTRICAL SUPPLY TO THE PREFAB EASY SCREED, BEFORE CARRYING OUT ANY MAINTENANCE ACTIVITIES TO THE MACHINE.

In order to achieve a maximum cooling effect the ventilation openings must stay free from dirt, grease and concrete. Check them at the end of each working day. If necessary clean them with a brush or a damp cloth.

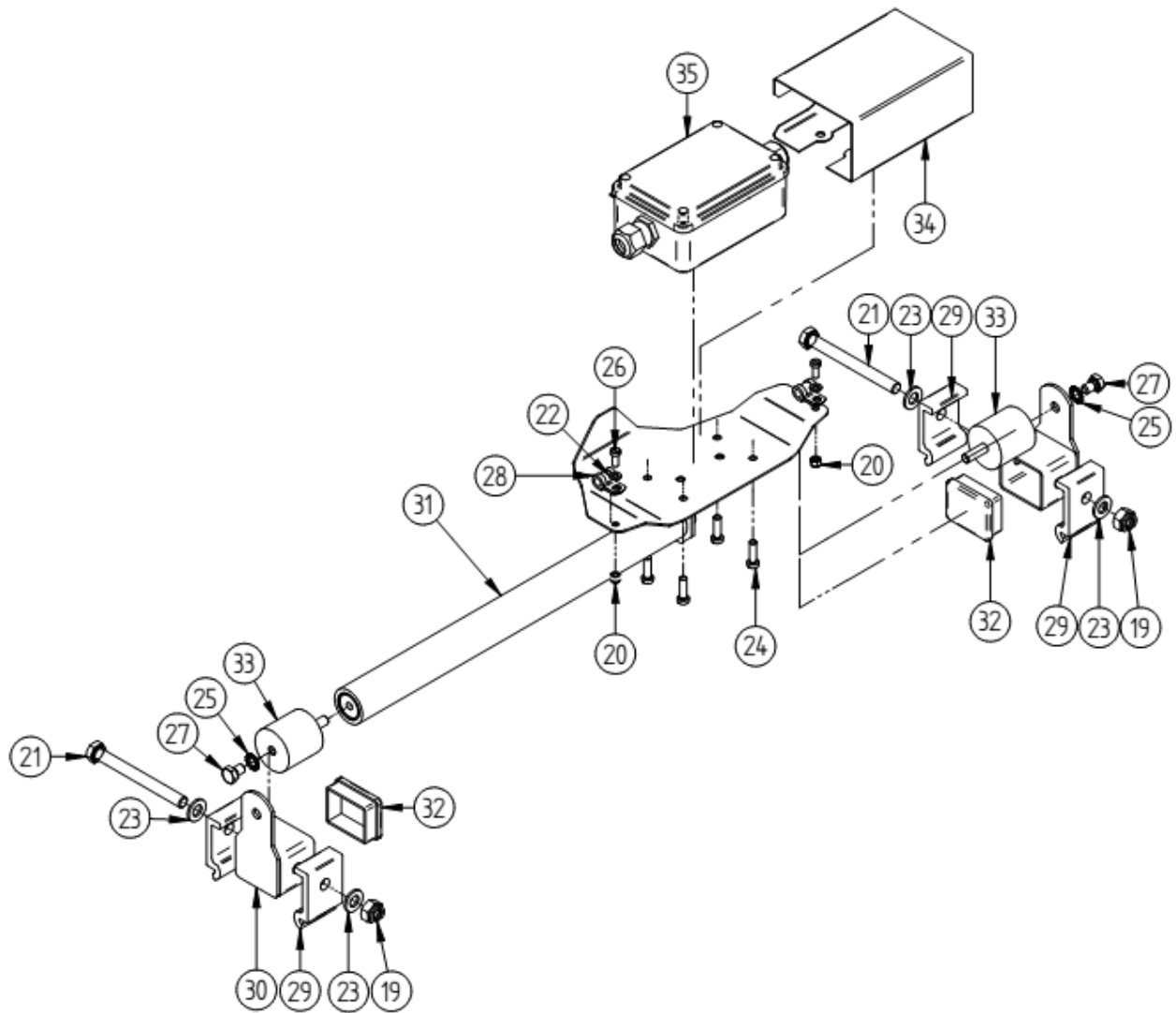
7. Parts list



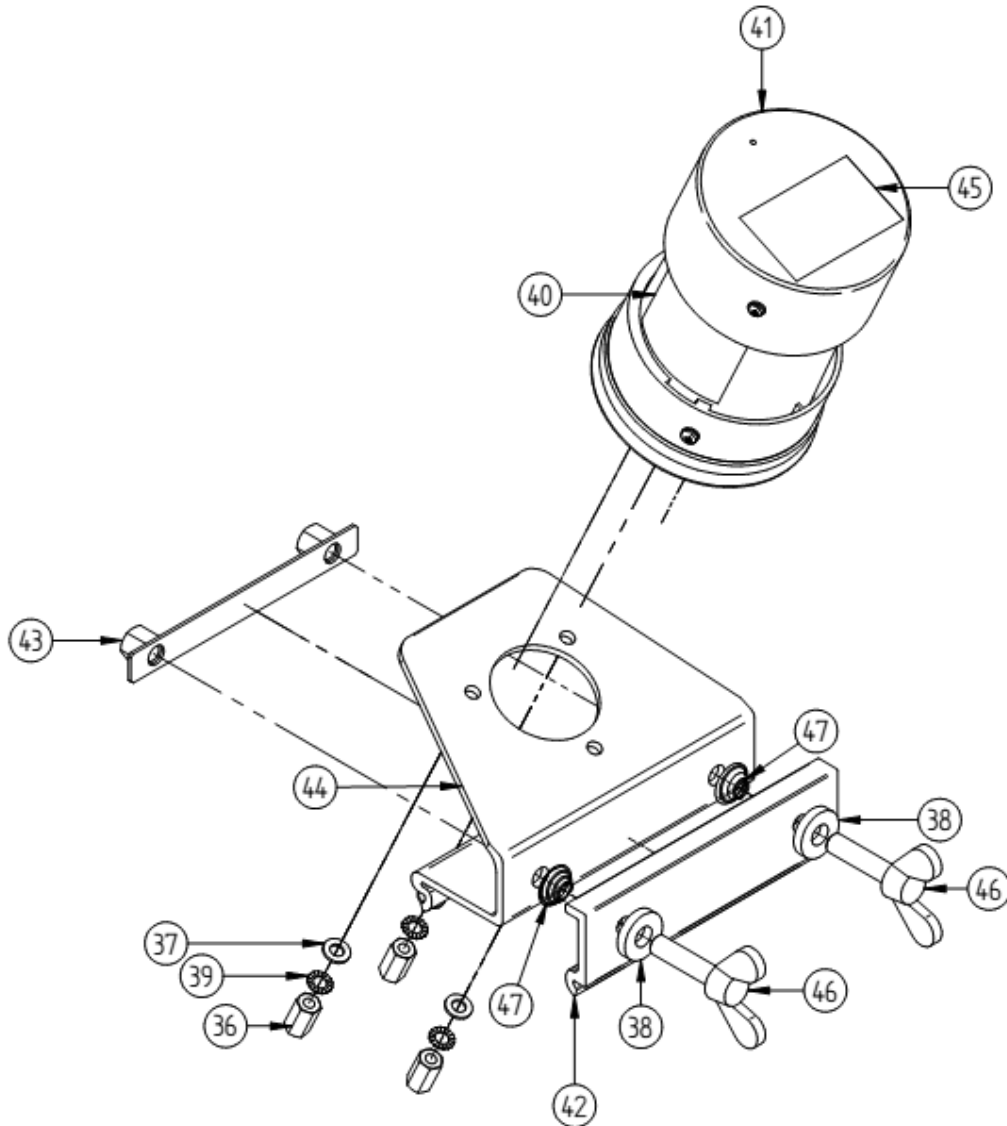
23700220ER - Prefab Easyscreed			
Item Number	Part Number	Discription	Quantity
1	0017	10m cable 2x1.5 mm with molded plug	1
2	0153	flat washer M5	2
3	0261	cil. head screw M5 X 12	2
4	2335	cable clamp 8mm	2
5	23714C	handle A	1
6	23714D	handle B	1
7	23714E	vibrating unit complete	1
8	260030LW	beam 10 ft	1



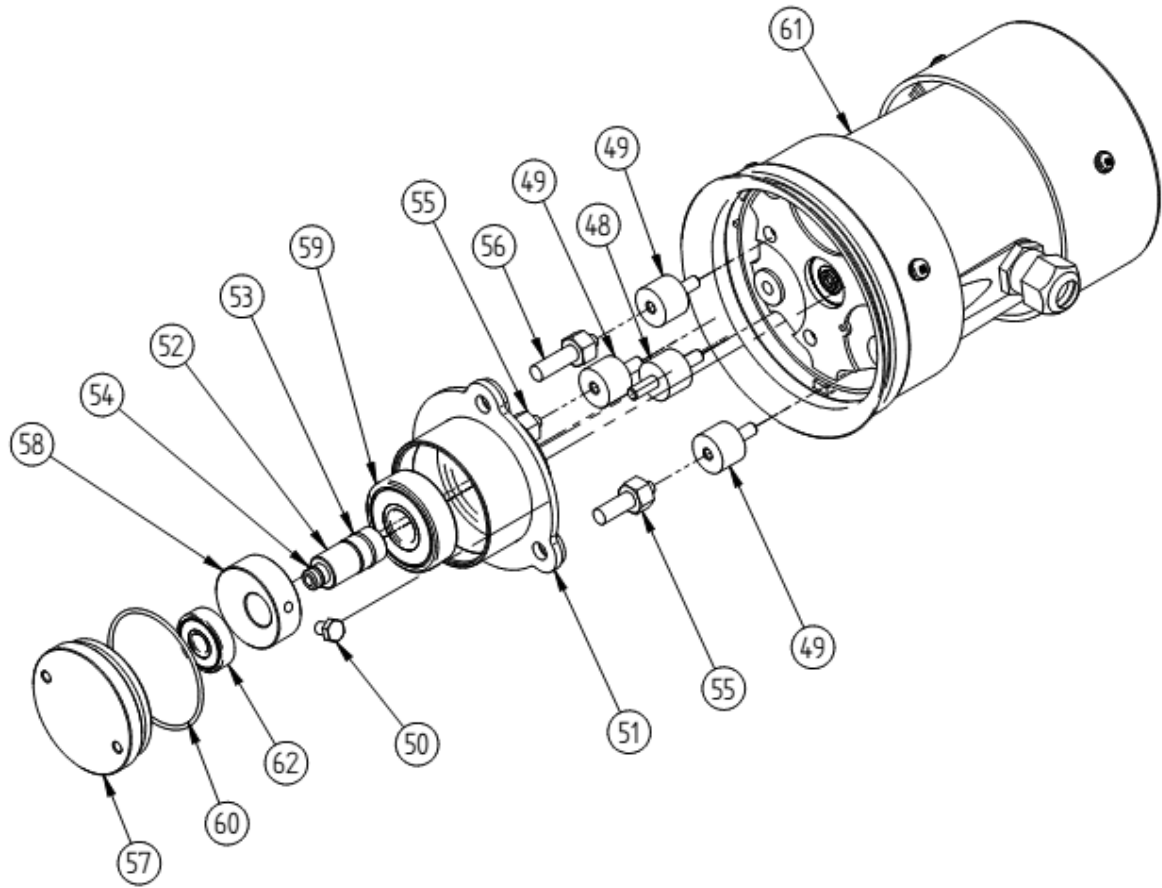
23714C - handle A			
Item Number	Part Number	Discription	Quantity
9	0093	selflocking nut M10	2
10	0116	hexagon bolt M10 X 110	2
11	0156	flat washer M10	4
12	0213	lock washer M8	2
13	0285	hexagon bolt M8 X 12	2
14	23712	clamping bracket	4
15	23713	handle mounting block	2
16	23714A	handle	1
17	23715	profile cap	2
18	23719	vibrationdamper 40x40 in-out m8 X 23	2



23714D - handle B			
Item Number	Part Number	Discription	Quantity
19	0093	selflocking nut M10	2
20	0099	selflocking nut M5	2
21	0116	hexagon bolt M10 X 110	2
22	0153	flat washer M5	2
23	0156	flat washer M10	4
24	0210	nylon cil. head screw M6 X 20	4
25	0213	lock washer M8	2
26	0261	cil. head screw M5 X 12	2
27	0285	hexagon bolt M8 X 12	2
28	2335	cable clamp 8mm	2
29	23712	clamping bracket	4
30	23713	handle mounting block	2
31	23714B	handle switch	1
32	23715	profile cap	2
33	23719	vibrationdamper 40x40 in-out m8 X 23	2
34	2391	speed controller cover	1
35	2399	speed controller complete	1



23714E - vibrating unit complete			
Item Number	Part Number	Discription	Quantity
36	0086	D3 nut M8	3
37	0155	flat washer M8	3
38	0176	flat washer M12 X 6	2
39	0213	lock washer M8	3
40	10539E	CE sticker	1
41	23520N	vibration motor 230V	1
42	23710	clamping strip	1
43	23711	nut strip	1
44	23718	eccentric mounting plate	1
45	2386E	Typeplate E-lap	1
46	2606	wingbolt M12	2
47	2607	spring	2



23520N - vibration motor 230V			
Item Number	Part Number	Discription	Quantity
48	0052	vibrationdamper 20x15 m6x10 out	1
49	0051	vibrationdamper 20x15 in/out m6	3
50	0122	hexagon bolt M6 X 8	1
51	2301N	eccentric housing double bearing	1
52	2302N	eccentric axle with double bearing	1
53	2303	O-Ring	1
54	2304	O-Ring	1
55	2307	adaptor bolt short	2
56	2308	adaptor bolt long	1
57	2311(KAAL)	eccentric housing cover	1
58	231217	eccentric weight	1
59	2314	bearing bearinghouse	1
60	2316	O-Ring	1
61	2320ASS-HAL	vibration motor 230V	1
62	2343	bearing excentre cover	1

8. Troubleshooting, repairs

The table below shows the most occurring problems, causes and solutions (Prefab Easy Screed):

PROBLEM	CAUSE	SOLUTION
The machine does not vibrate in the 'ON' position.	Fault in the electrical connections of the feeder cable.	Check the electrical connections to the bullfloat, switch, plug and feeder cable for breakage. Replace the faulty part(s).
The machine does not vibrate at the required frequency.	Extensive voltage drop, due to the feeder cable being too long (longer than 25 m).	Move the electrical source closer to the working area and use shorter cable.
The electrical motor rotates irregularly and makes a lot of noise.	<ol style="list-style-type: none"> 1. the bearings are worn out, and/or 2. an electrical defect in the stator, and/or 3. a break in the feeder cable. 	<ol style="list-style-type: none"> 1. replace the bearings, and/or 2. replace the stator, and/or 3. repair or replace the feeder cable.
The connected and running screed rotates irregularly and does not vibrate at the required frequency.	Insufficient current supply.	Electrical supply via a safety transformer, check the distributed power from the safety transformer. Electrical supply via electrical mains, check the plug connections for defects. Use an extension lead of a maximum length of 25 m. with a cross section of 2.5 mm ² .
The electrical motor runs irregularly.	The carbon brushes are worn out.	Replace the carbon brushes (replace every 6-12 months).

Table 2: Possible problems, causes and solutions.

Tip: Please contact Lievers Holland if problems occur that are not mentioned in the list, or if a mentioned problem is not solved by the solutions in the list.

Contact details Lievers Holland:

PO Box 103
 3640 AC Mijdrecht
 Tel: +31 (0)297-231900
 Fax: +31 (0)297-231909
 E-mail: info@lieversholland.nl
 Internet: www.lieversholland.com

Repairs

It is not strictly necessary to keep spare parts in stock. If you prefer to have parts in stock, please ask your supplier or dealer for advice.

When ordering parts please state the following information:

- Type of machine.
- Year of construction / serial number.

- Order number plus description of the part.
- The required quantity.
- The dispatch address and dispatch mode.

Tip: When ordering parts, fill in the order form accurately. Lievers Holland declines all responsibility for the supply of incorrect spares due to incomplete or unclear requests.

9. Dismantling, disposal

National and local regulations concerning dismantling and disposal of materials need to be obeyed (separated disposal).

Instructions for the protection of the environment. The old machine contains valuable materials. Take the discarded apparatus and accessories to the nearest official collection point.

10. Declaration of Conformity

EC DECLARATION OF CONFORMITY

EC-declaration of agreement for machinery

(Directive 2006/42/EC, Annexe II, under A)

Supplier: Bouwmachinefabriek Lievers B.V.
Address: Groot Mijdrechtstraat 68, 3641 RW Mijdrecht

Hereby declares that

The Prefab Easy Screed

- 1) Complies with the regulations for the Machine Directive 2006/42/EC and the EMC-Directive 2004/108/EC.
- 2) Complies with the following harmonised standards: NEN- EN 12100-1:2003, NEN- EN 12100-2:2003, NEN- EN 12649

Mijdrecht, June 29, 2016

Supplier: Bouwmachinefabriek Lievers B.V.
Address: Groot Mijdrechtstraat 68, 3641 RW Mijdrecht



Name: C.M. de Wit
Position: Managing director